

### Features:

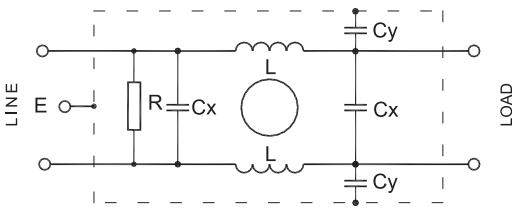
- ✎ Widely used in many industries
- ✎ Compact, easy for installation
- ✎ Excellent insertion losses
- ✎ CSA, CE approved
- ✎ Dual  $\pi$  filtering network of DNF05-H type



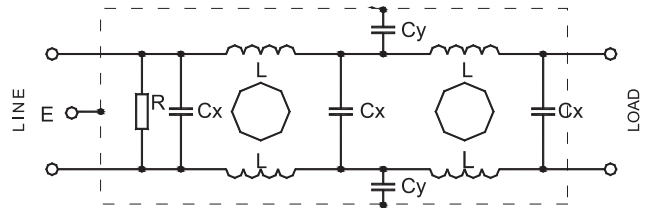
### Main Parameters ▼

Part Number	Rated Voltage	Rated Current	Test Voltage		IEC Climatic Category	Cx ( $\mu$ F) $\pm 10\%$	Cy (nF) $\pm 20\%$	L (mH) -30% ~+50%	R ( $M\Omega$ ) $\pm 10\%$	Leakage Current 250V~50Hz
			Line-to-Line	Line-to-Ground						
DNF05-G-10A	250V~50/60Hz	10A	1800VDC,2s	1800V~50/60Hz,2s	25/085/21	0.1	3.3	3.0	0.68	<0.75mA
DNF05-G-20A	250V~50/60Hz	20A	1800VDC,2s	1800V~50/60Hz,2s	25/085/21	0.1	3.3	0.9	0.68	<0.75mA
DNF05-H-3A	250V~50/60Hz	3A	1800VDC,2s	1800V~50/60Hz,2s	25/085/21	0.15	4.7	1.4	0.68	<1.0mA
DNF05-H-5A	250V~50/60Hz	5A	1800VDC,2s	1800V~50/60Hz,2s	25/085/21	0.15	4.7	0.8	0.68	<1.0mA
DNF05-H-10A	250V~50/60Hz	10A	1800VDC,2s	1800V~50/60Hz,2s	25/085/21	0.15	4.7	0.6	0.68	<1.0mA

### Electrical Schematic ▼

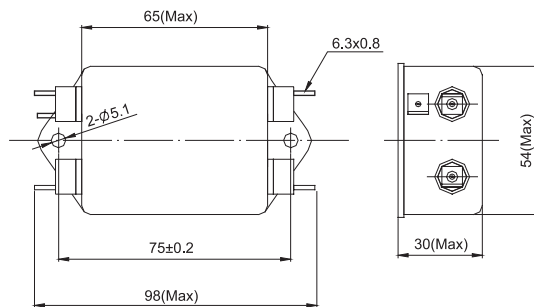


DNF05-G



DNF05-H

### Dimensions (Unit: mm) ▶



DNF05-G    DNF05-H

Typical Insertion Losses  
In 50Ω system ▼

