



Features:

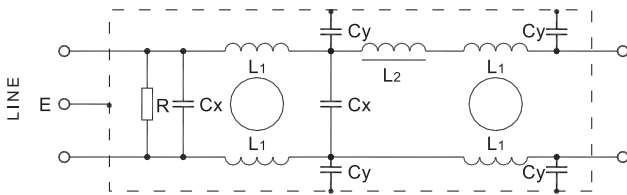
- Very good insertion losses at a wide frequency range
- Widely used in Switching Power Supplies, UPS and industrial automatic-control equipment
- Dual π filtering network



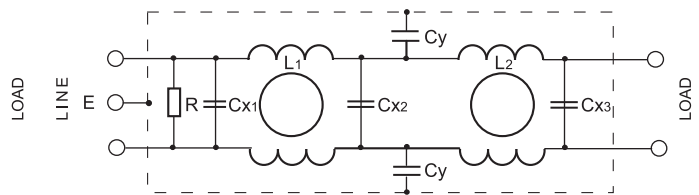
Main Parameters

Part Number	Rated Voltage	Rated Current	Test Voltage		IEC Climatic Category	Cx (μ F) $\pm 10\%$	Cy (nF) $\pm 20\%$	L (mH) -30% ~+50%	R (M Ω) $\pm 10\%$	Leakage Current 250V~50Hz
			Line-to-Line	Line-to-Ground						
DNF250-H-10A	250V~50/60Hz	10A	1800VDC,2s	1800V-50/60Hz,2s	25/085/21	1.0	4.7	L1=3.0 L2=0.16	0.47	<1.0mA
DNF250-T-6A	250V~50/60Hz	6A	1800VDC,2s	1800V-50/60Hz,2s	25/085/21	Cx1=0.22 Cx2=0.47 Cx3=0.1	2.2	L1=2.4 L2=18.6	0.68	<0.5mA
DNF250-T-16A	250V~50/60Hz	16A	1800VDC,2s	1800V-50/60Hz,2s	25/085/21	1.0	2.2	4.0	0.22	<0.5mA

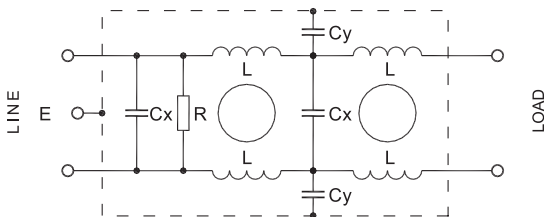
Electrical Schematic



DNF250-H-10A



DNF250-T-6A

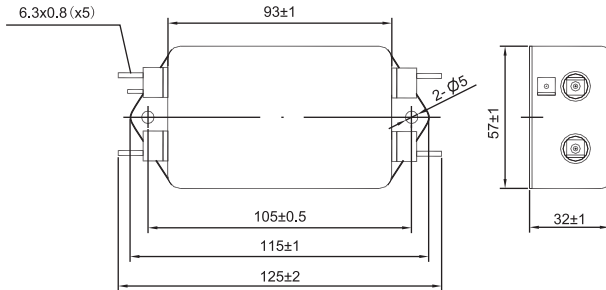


DNF250-T-16A

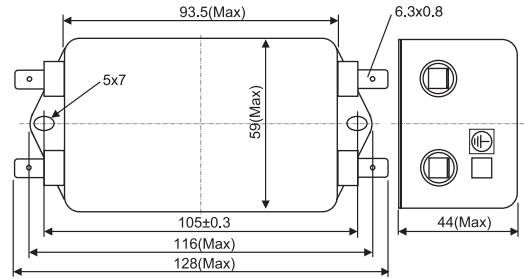
Dimensions (Unit: mm) ▼



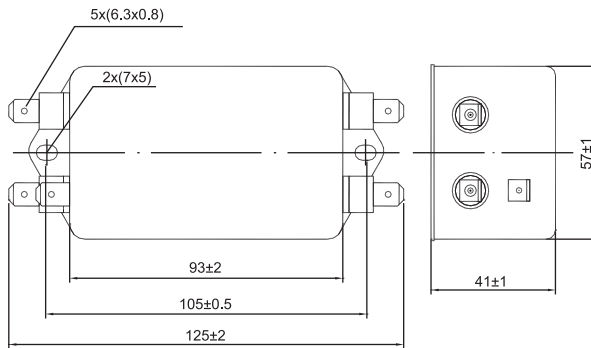
DNF250



DNF250-H-10A

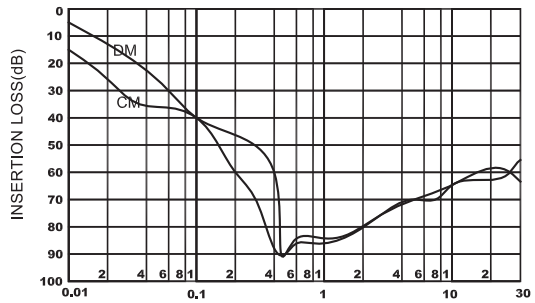


DNF250-T-6A

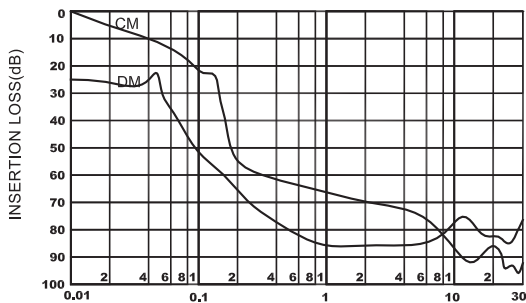


DNF250-T-16A

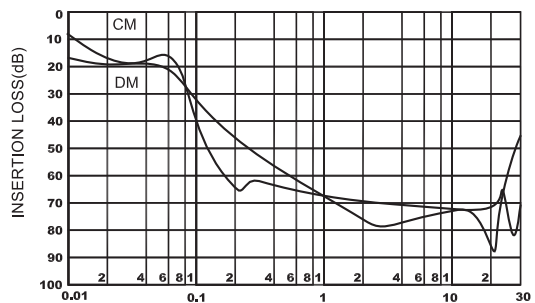
Typical Insertion Losses
In 50Ω system ▶



FREQUENCY (MHz)
DNF250-H-10A



FREQUENCY (MHz)
DNF250-T-6A



FREQUENCY (MHz)
DNF250-T-16A