

PNF221

Features:

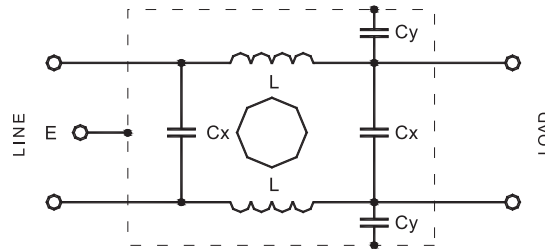
- General purpose EMI filter
- Compact, easy for installation
- Low leakage current and good insertion losses



Main Parameters ▼

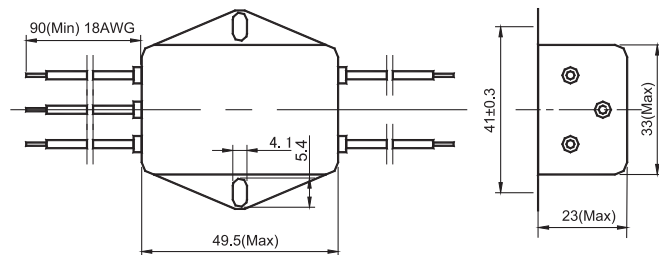
Part Number	Rated Voltage	Rated Current	Test Voltage		IEC Climatic Category	Cx (μF) ±10%	Cy (nF) ± 20%	L (mH) - 30% ~+50%	Leakage Current 250V~50Hz
			Line-to-Line	Line-to-Ground					
PNF221-G-1A	250V~50/60Hz	1A	1800VDC,2s	1800V-50/60Hz,2s	25/085/21	0.1	3.3	6.8	<0.75mA
PNF221-G-2A	250V~50/60Hz	2A	1800VDC,2s	1800V-50/60Hz,2s	25/085/21	0.1	3.3	6.8	<0.75mA
PNF221-G-3A	250V~50/60Hz	3A	1800VDC,2s	1800V-50/60Hz,2s	25/085/21	0.1	3.3	2.0	<0.75mA
PNF221-G-5A	250V~50/60Hz	5A	1800VDC,2s	1800V-50/60Hz,2s	25/085/21	0.1	3.3	0.8	<0.75mA
PNF221-G-6A	250V~50/60Hz	6A	1800VDC,2s	1800V-50/60Hz,2s	25/085/21	0.1	3.3	0.8	<0.75mA
PNF221-G-10A	250V~50/60Hz	10A	1800VDC,2s	1800V-50/60Hz,2s	25/085/21	0.1	3.3	0.45	<0.75mA

Electrical Schematic ►



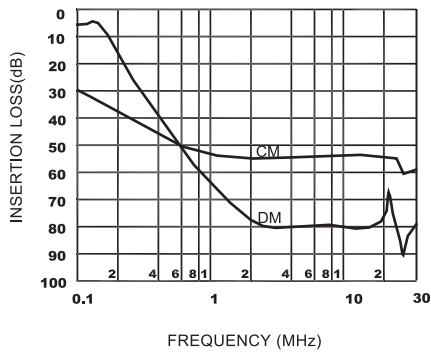
PNF221-G

Dimensions (Unit: mm) ►

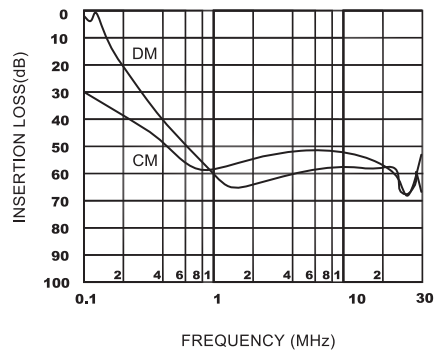


PNF221-G

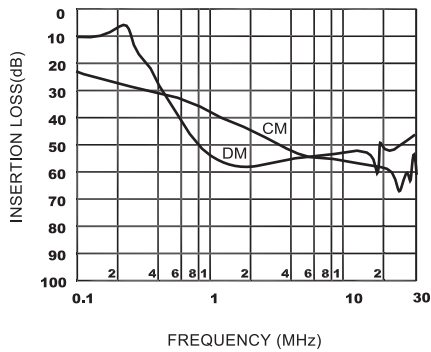
Typical Insertion Losses
In 50Ω system ▼



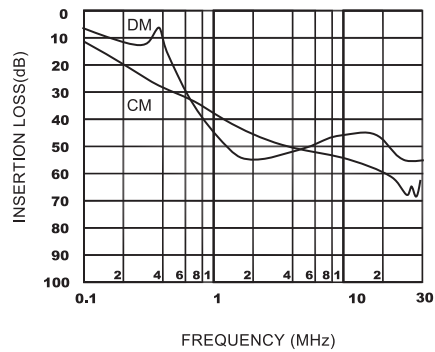
PNF221-G-1A



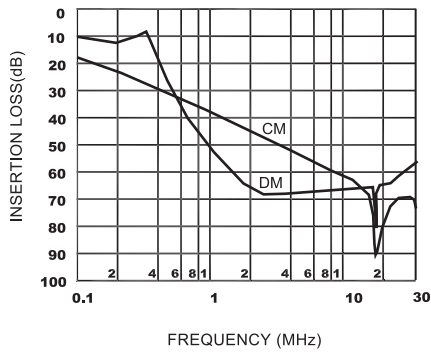
PNF221-G-2A



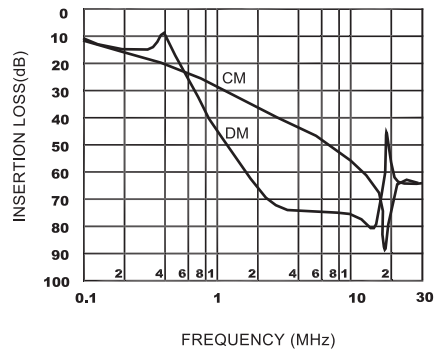
PNF221-G-3A



PNF221-G-5A



PNF221-G-6A



PNF221-G-10A