

DNF20

Features:

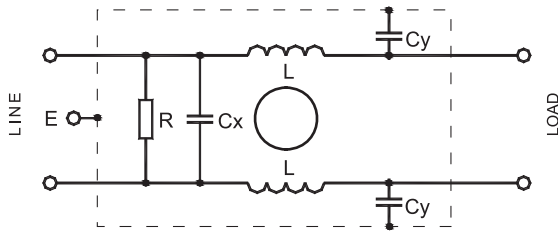
- Compact, installation on PCB
- Widely used for controlling EMI from PCB
- Low leakage current can be provided if demanded



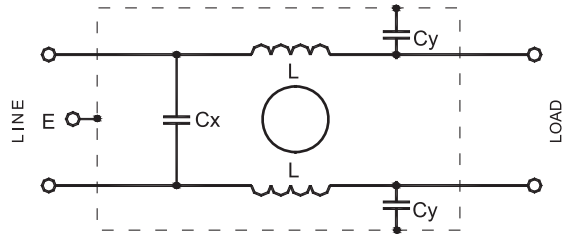
Main Parameters

Part Number	Rated Voltage	Rated Current	Test Voltage		IEC Climatic Category	Cx (μ F) $\pm 10\%$	Cy (nF) $\pm 20\%$	L (mH) -30% ~+50%	R (M Ω) $\pm 10\%$	Leakage Current 250V~50Hz
			Line-to-Line	Line-to-Ground						
DNF20-SG-0.5A	250V~50/60Hz	0.5A	1800VDC,2s	1800V~50/60Hz,2s	25/085/21	0.22	10	10	1.0	<1.5mA
DNF20-SG-1A	250V~50/60Hz	1A	1800VDC,2s	1800V~50/60Hz,2s	25/085/21	0.1	2.2	10	/	<0.5mA
DNF20-SG-4A	250V~50/60Hz	4A	1800VDC,2s	1800V~50/60Hz,2s	25/085/21	0.1	3.3	2.0	0.68	<0.75mA
DNF20-SG-H-1A	250V~50/60Hz	1A	1800VDC,2s	1800V~50/60Hz,2s	25/085/21	0.047	2.2	1.0	/	<0.5mA

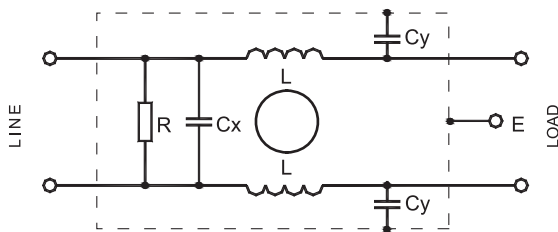
Electrical Schematic



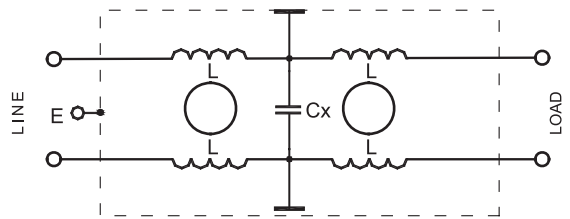
DNF20-SG-0.5A



DNF20-SG-1A



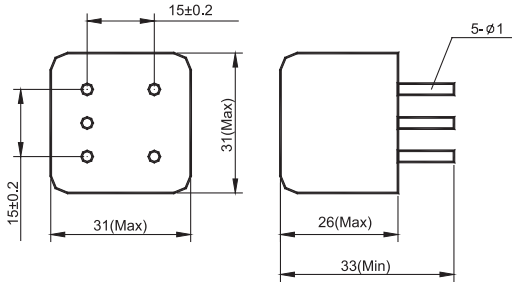
DNF20-SG-4A



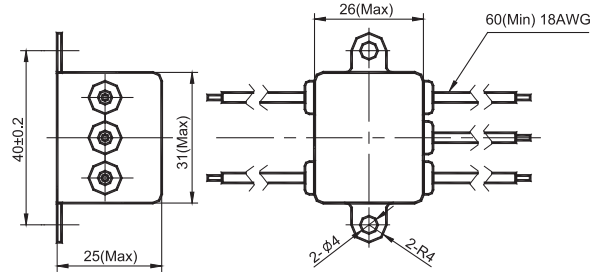
DNF20-SG-H-1A

DNF20

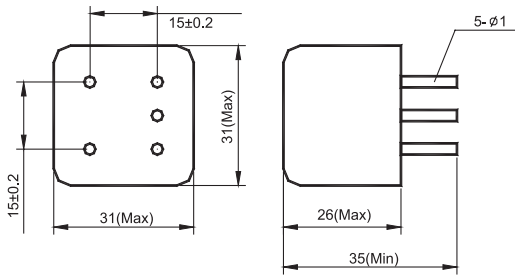
Dimensions (Unit: mm) ▼



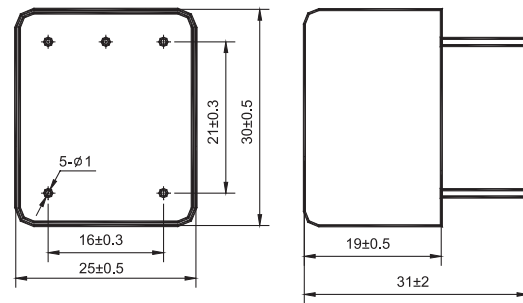
DNF20-SG-0.5A



DNF20-SG-1A

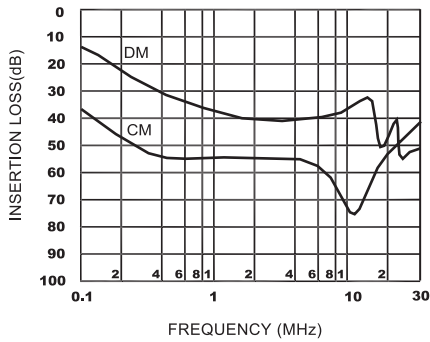


DNF20-SG-4A

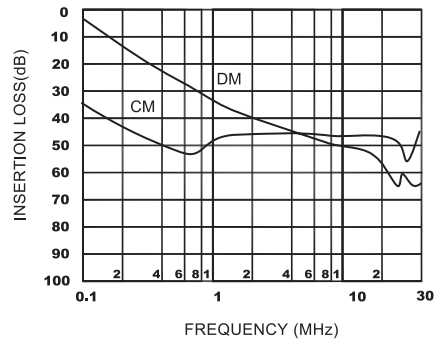


DNF20-SG-H-1A

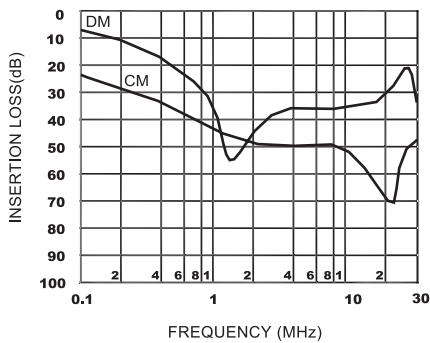
Typical Insertion Losses
In 50Ω system ▼



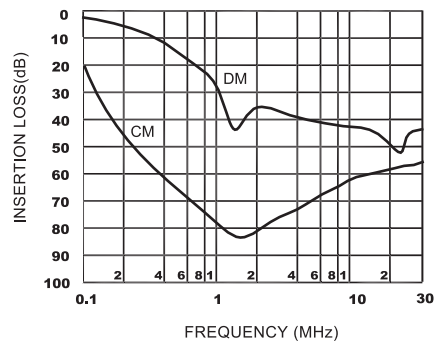
DNF20-SG-0.5A



DNF20-SG-1A



DNF20-SG-4A



DNF20-SG-H-1A