

DNF251

Features:

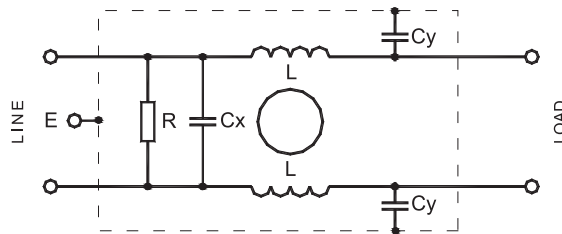
- General purpose EMI filter with IEC-inlet
- Compact, easy for installation
- Excellent insertion losses



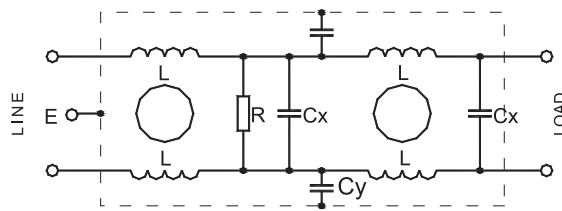
Main Parameters ▼

Part Number	Rated Voltage	Rated Current	Test Voltage		IEC Climatic Category	Cx (μ F) $\pm 10\%$	Cy (nF) $\pm 20\%$	L (mH) -30% ~+50%	R (M Ω) $\pm 10\%$	Leakage Current 250V~50Hz
			Line-to-Line	Line-to-Ground						
DNF251-G-15A	250V~50/60Hz	15A	1800VDC,2s	1800V~50/60Hz,2s	25/085/21	1.0	10.0	3.6	1.0	<1.5mA
DNF251-H-3A	250V~50/60Hz	3A	1800VDC,2s	1800V~50/60Hz,2s	25/085/21	1.0	3.3	2.2	0.68	<0.75mA
DNF251-H-5A	250V~50/60Hz	5A	1800VDC,2s	1800V~50/60Hz,2s	25/085/21	1.0	3.3	2.0	0.68	<0.75mA

Electrical Schematic ▼

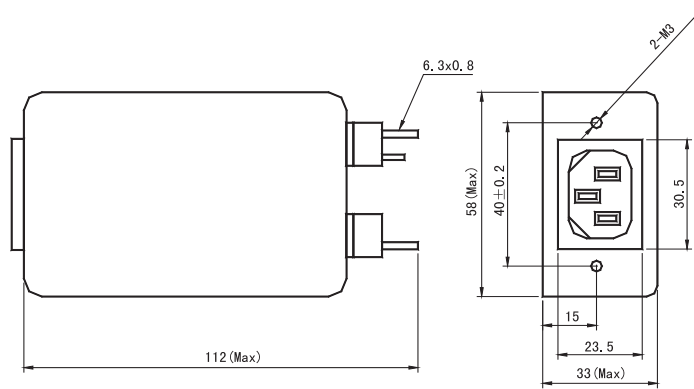


DNF251-G



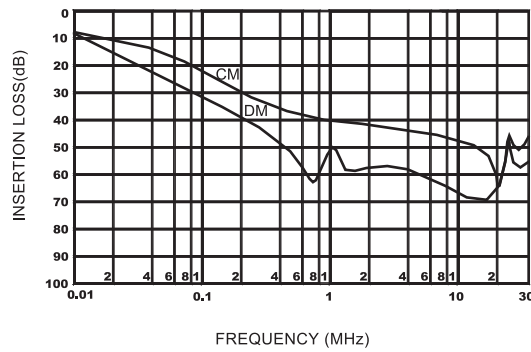
DNF251-H

Dimensions (Unit: mm) ▼

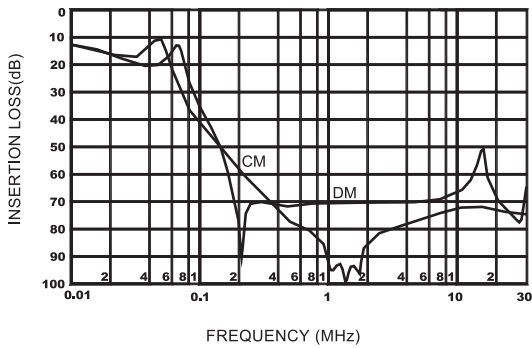


DNF251-H DNF251-G

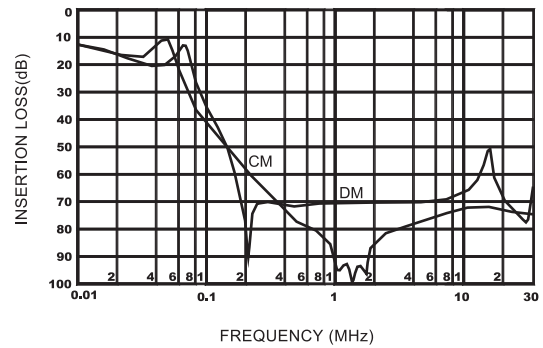
Typical Insertion Losses
In 50Ω system ▼



DNF251-G-15A



DNF251-H-3A



DNF251-H-5A