

Features:

- General purpose EMI filter
- Good insertion losses
- CE approved

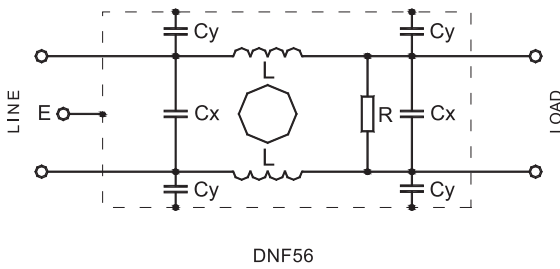
CE DNF56



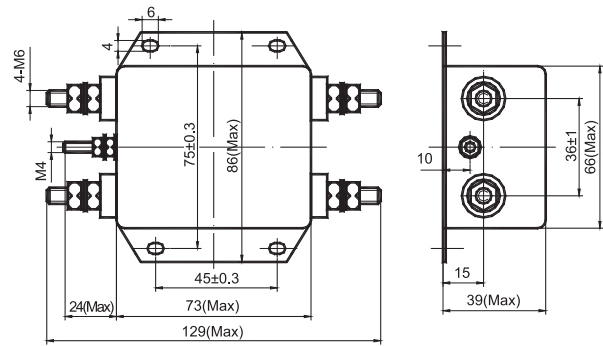
Main Parameters ▼

Part Number	Rated Voltage	Rated Current	Test Voltage		IEC Climatic Category	Cx (μ F) $\pm 10\%$	Cy (nF) $\pm 20\%$	L (mH) -30% ~+50%	R (M Ω) $\pm 10\%$	Leakage Current 250V~50Hz
			Line-to-Line	Line-to-Ground						
DNF56-80A	80VDC	80A	1800VDC,2s	1800V~50/60Hz,2s	25/085/21	1.0	10	0.3	1.0	<1.5mA

Electrical Schematic ▼



Dimensions (Unit: mm) ▼



DNF56

Typical Insertion Losses In 50 Ω system ▶

