

CE DNF07

Features:

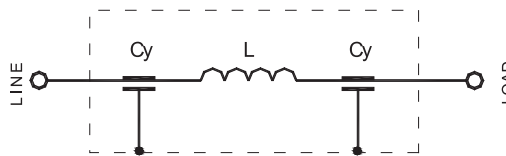
- ☞ Feed-through EMI filter
- ☞ Excellent insertion loss in RF frequency
- ☞ Widely used in communication, navigation and other electronic equipment and systems
- ☞ Nice for controlling surge
- ☞ CE approved



Main Parameters

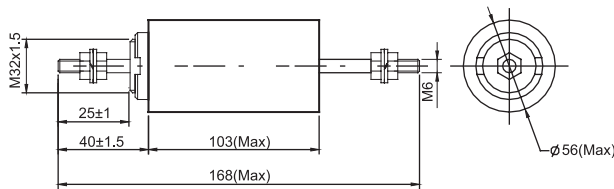
Part Number	Rated Voltage	Rated Current	Test Voltage	IEC Climatic Category	Cx (μF) ±10%
DNF07-R-40A	250V~50/60Hz or 400VDC	40A	1633VDC,2s	40/085/56	4.7
DNF07-R-100A	440V~50/60Hz or 750VDC	100A	2500VDC,2s	40/085/56	1
DNF07-R-200A	440V~50/60Hz or 750VDC	200A	2500VDC,2s	40/085/56	1
DNF07-R-300A	440V~50/60Hz or 750VDC	300A	2500VDC,2s	40/085/56	1

Electrical Schematic

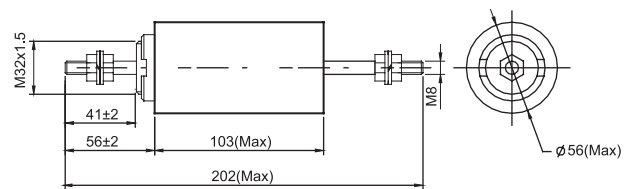


DNF07-R

Dimensions (Unit: mm)

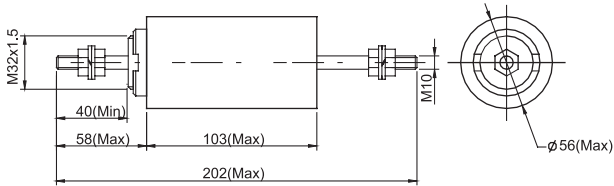


DNF07-R-40

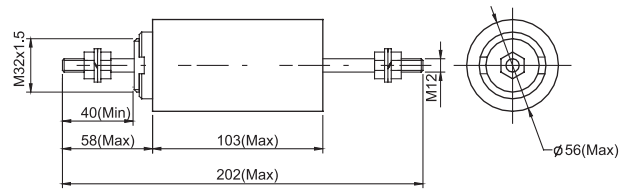


DNF07-R-100

Dimensions (Unit: mm) ▼

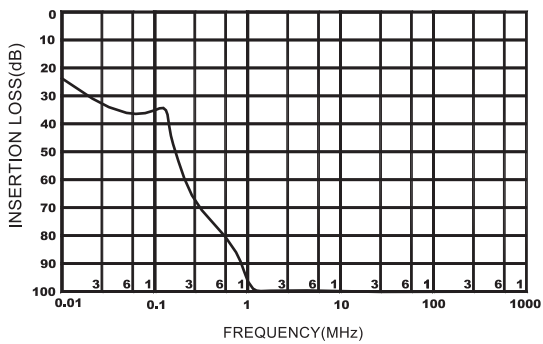


DNF07-R-200A

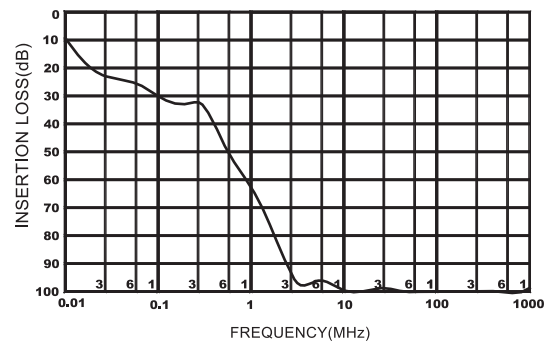


DNF07-R-300A

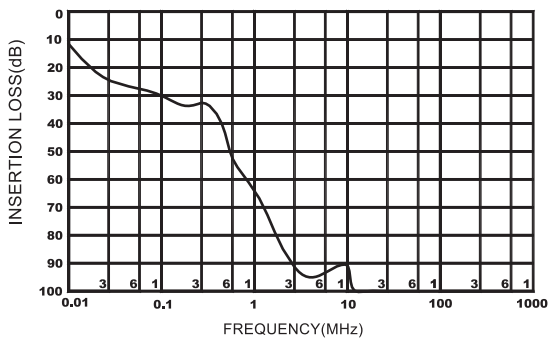
Typical Insertion Losses In 50Ω system ▼



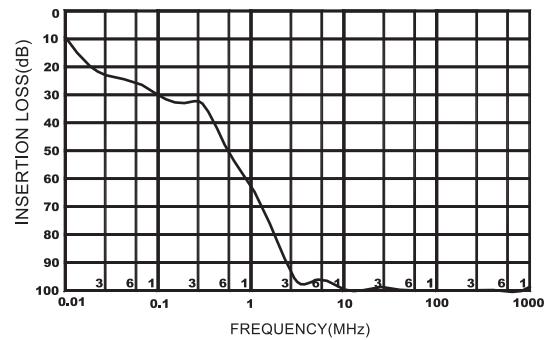
DNF07-R-40A



DNF07-R-100A



DNF07-R-200A



DNF07-R-300A