

Features:

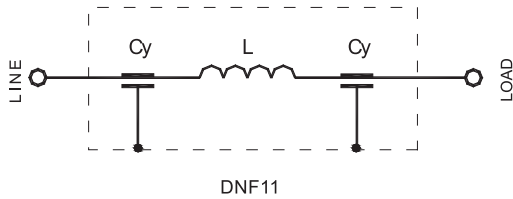
- ☞ Feed-through EMI filter
- ☞ Excellent insertion loss within RF frequency
- ☞ Widely used in communication, navigation and other electronic equipment and systems
- ☞ Nice for controlling surge
- ☞ CE approved



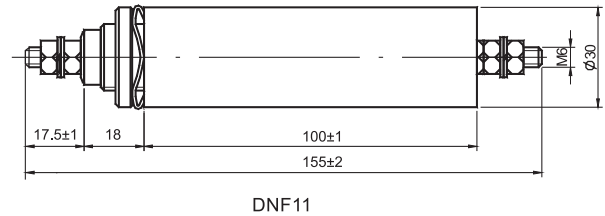
Main Parameters

Part Number	Rated Voltage	Rated Current	Test Voltage	IEC Climatic Category	Cx (μF) ±10%
DNF11-75A	250V~50/60Hz	75A	1800VDC,2s	40/085/56	1.0

Electrical Schematic



Dimensions (Unit: mm)



Typical Insertion Losses In 50Ω system

