

CE FTC08

Features:

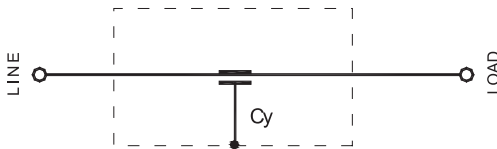
- ☞ Feed-through EMI filter
- ☞ Excellent insertion loss within RF frequency
- ☞ Widely used in communication, navigation and other electronic equipment and systems
- ☞ Nice for controlling surge
- ☞ CE approved



Main Parameters

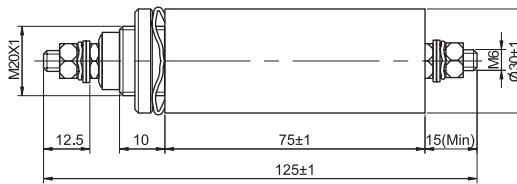
Part Number	Rated Voltage	Rated Current	Test Voltage	IEC Climatic Category	Cx (μF) ±20%
FTC08-50A	250V-50/60Hz or 440VDC	50A	1633VDC,2s	40/085/56	4.0
FTC08-75A	250V-50/60Hz or 440VDC	75A	1633VDC,2s	40/085/56	4.0

Electrical Schematic



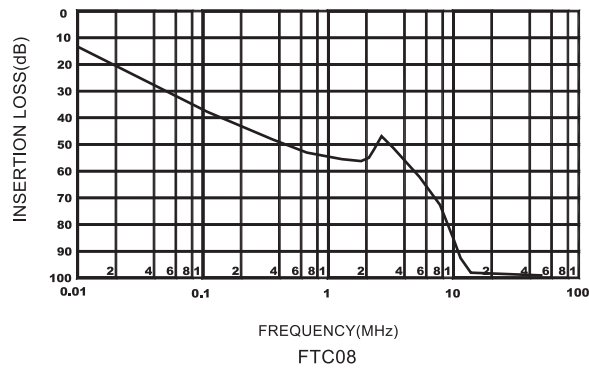
FTC08

Dimensions (Unit: mm)



FTC08

Typical Insertion Losses In 50Ω system



FTC08