

**ETH/Multi\_E1 Convertor [ADEOP-4/8/16]:**

|| Outline:

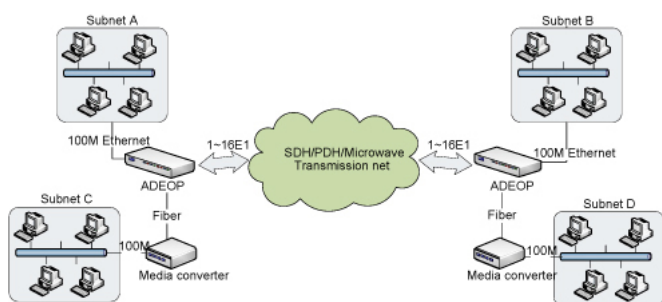
ADEOP is the IP over TDM converter, which supports the conversion from MAC frames to 1 - 16 E1 lines. The maximum bit rate is 31.68Mbps (16E1 lines). With different LAN card, E1 card and power card, it can meet various requirements. It not only provides alarms and statuses of the E1 line and Ethernet interface together with advanced management functions, such as, throughput statistic of the Ethernet, but also supports the Unification Network Management via SNMP and CLI commands.

Adopting international standard protocol , ADEOP can communicate with the similar product of other manufacturers.

Practicality :



Application mode:



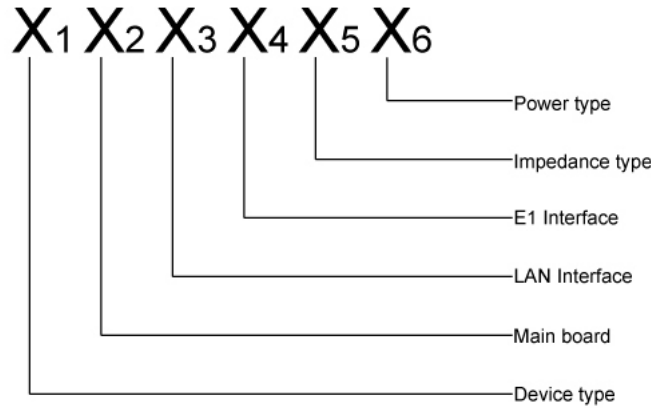
Main Features :

- ◆ Implement to convert ETH to 1~4,1~8,1~16E1 ;
- ◆ Supports automatic removal and recovery of E1 channels that used for carrying payload. The E1 channels that have urgent alarm are removed automatically, and during this period, some Ethernet packets may be lost; It will be resumed when the fault dismisses ;
- ◆ The differential delay between any two of the 16 E1 can be up to 220ms; when the factual differential delay exceeds 220ms, alarm is generated and Ethernet is cut off ;
- ◆ E1 Interface jitter tolerance and jitter transfer characteristic compliant to ITU-T G.823 ;
- ◆ Provides up to 4 shared Ethernet interfaces ;
- ◆ Accepts frames with length between 64 and 1916 bytes (otherwise filtering) ;
- ◆ VLAN function based on tags compliant to IEEE 802.1Q ;
- ◆ Throughout statistic of the Ethernet packets based on port, such as error packets ;
- ◆ Optional optical Ethernet interface compliant to IEEE 100BASE-FX standard (can communicate with remote media convertor ) and electrical Ethernet interface compliant to IEEE 802.3 standard ;
- ◆ CLI command via serial RS232 port, telnet and ADEOP network management platform based on SNMP(V1 and V2C) ;
- ◆ Optional local timing mode and tracing E1 line ;
- ◆ The source of tracing E1 line can be switched according to the signal quality. For instance, the system is set as tracing the first E1 link, when some malfunction occurs to it , the system will automatically change to tracing the second E1 link; when the fault disappear, the system will be re-tracing the first E1 link.
- ◆ Compliant to ITU-T G.7041(GFP)、G.7042(VCAT&LCAS)、G.7043 (Ethernet to nxE1 mapping)、G.8040(Ethernet to single E1 mapping) ;
- ◆ Remote/local E1 loopback function will be convenient for E1 line (transmission system included) testing ;
- ◆ Complete alarm which is selectable to be shown between local and remote ;
- ◆ Single-board design with small dimension, 1 U high and low power consumption.

**ETH/Multi\_E1 Convertor [ADEOP-4/8/16] continue :**

product type :

ADEOP type consist of 6 digits, see the figure below :



LAN, E1, Impedance, E1 amount, power type description:

X1	Device type	X2	Main board
1	ADEOP -4: standard Ethernet to 4E1 convertor. The mainboard is EOP4	1	EOP4: the mainboard of ADEOP4, 4E1
2	ADEOP -8: standard Ethernet to 8E1 convertor. The mainboard is EOP8	2	EOP8: the mainboard of ADEOP8, 8E1
3	ADEOP -16: standard Ethernet to 16E1 convertor. The mainboard is EOP16	3	EOP16: the mainboard of ADEOP16, 16E1
X3	LAN interface	X4	E1 interface
1	4 electrical Ethernet ports	1	4 E1 are provided
2	3 electrical Ethernet ports, 1 optical Ethernet port (FC connector, dual fiber, 1310)	2	8 E1 are provided
3	3 electrical Ethernet ports, 1 optical Ethernet port (SC connector, dual fiber, 1310)	3	16 E1 are provided
4	3 electrical Ethernet ports, 1 optical Ethernet port (single fiber, 1550)		
5	3 electrical Ethernet ports, 1 optical Ethernet port (single fiber, 1310)		
6	3 electrical Ethernet ports, 1 optical Ethernet port (long-distance, dual fiber, 1310)		
7	3 electrical Ethernet ports, 1 optical Ethernet port (long-distance, single fiber, 1550)		
8	3 electrical Ethernet ports, 1 optical Ethernet port (long-distance, single fiber, 1310)		
X5	Impedance type	X6	Power type
1	75ohm, coaxial connector	1	-48V DC
2	75ohm, DB37 connector, 4E1	2	220V AC
3	75ohm, DB37 connector, 8E1	3	-48 DC & 220V AC
4	120ohm, RJ45 connector		
5	120ohm, DB37 connector		