

ADP-150S4 Series:

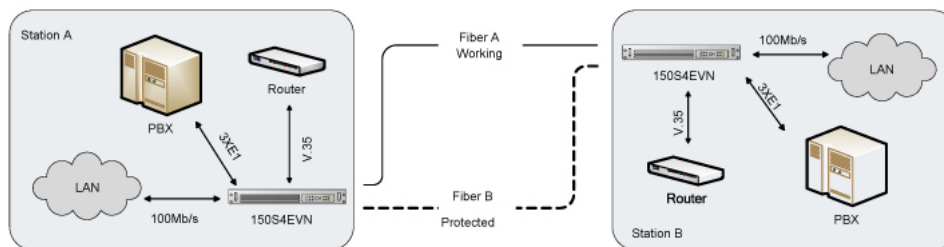
|| Outline:

ADP-150S4 series are Multi E1 and Fast Ethernet transmission system , used to build a 150Mb/s optical point-to-point link . It can transmit 4 E1 and a fast Ethernet at full speed . It provides an order-wire and an auxiliary UART interface for Management.

Main Features :

- ◆ Optical interface transmission speed is 150 Mbps , and normal transmission distance is more than 50km ;
- ◆ Provide up to 4 E1 transparent transmission , also 1+1 optical APS and ALS can be selected ;
- ◆ One ETH channel can be selected , that can be shared by two ETH ports . ETH port complies with ITU-T 802.3, support 10M/100M, Half Duplex/Full Duplex auto negotiation ;
- ◆ One ETH channel can be selected , that works at 10Mb/s, Half Duplex/Full Duplex auto negotiation .It supports framed/unframed . when it is frame mode , its rate $N \times 64Kb/s$ ($N=1 \sim 31$) can be flexibly configured ;
- ◆ One V.35 interface can be selected , support framed/unframed . when it is frame mode , its rate $N \times 64Kb/s$ ($N=1 \sim 31$) can be flexibly configured ;
- ◆ V.35 can be used as DCE or DTE ;
- ◆ Supports Local and Remote Loop-back Test ;
- ◆ Support to distinguish remote power down and fiber breakdown ;
- ◆ Provides a transparent RS232 interface for user's data links as well as Provides a RS232 interface for Network Management .
- ◆ Single-board design with small dimension , 1U high and low power consumption.

Application mode:



Product Type:

NO.	Type	Useable E1 amount	Line Rate 100M ETH	ETH Bridge (Occupy2 #E1)	V.35 (Occupy1 #E1)	Optical Protect
1	S4EVP	3 (2 ~ 4 #)	√		√	√
2	S4EVN	3 (2 ~ 4 #)	√		√	
3	S4EP	4 (1 ~ 4 #)	√			√
4	S4BVP	2 (3 ~ 4 #)		√	√	√
5	S4BVN	2 (3 ~ 4 #)		√	√	
6	S4BP	3 (1 # , 3 ~ 4 #)		√		√
7	S4BN	3 (1 # , 3 ~ 4 #)		√		
8	S4VP	3 (2 ~ 4 #)			√	√
9	S4VN	3 (2 ~ 4 #)			√	